

**KalingaStone**<sup>®</sup>

TERRAZZO, MARBLE & QUARTZ  
PORCELAIN SURFACES

*Elevate*  
your design

PORCELAIN COLLECTION  
FROM TURKEY AND SPAIN




The background of the entire page is a solid blue color with several soft, white, fluffy clouds scattered across it. The clouds are most prominent in the upper left and lower right areas, with a few smaller ones in the middle.

**Kalinga***Stone*<sup>®</sup>

TERRAZZO, MARBLE & QUARTZ

---

PORCELAIN SURFACES



Add a design edge to your creations with exquisite international porcelain slim slabs – Kalesinterflex and Techlam. Through Kalesinterflex, we bring to you the culture and charm of Turkish craftsmanship. Whereas Techlam tiles originate from the hub of architectural innovation, Spain. Offering a plethora of designs, textures and colors, these slim slabs will add to your living spaces unmatched luxury and sophistication. As both brands continue to push the boundaries of creativity, the sky's the limit for your design dreams! Enjoy a vast expanse of magnificent choices with:

**Kalesinterflex®** | **TECHLAM®**  
PORCELAIN SLIM SLABS

# Features

Everything that must be in a ceramic tile and more...

Designed to shape the architecture of the future, Kalesinterflex is equipped with superior features to ensure flawless performance under any condition.



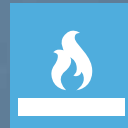
## WEIGHT\*

A 3mm-thick Kalesinterflex slab weighs 7kg/sqm while a 5mm-thick Kalesinterflex slab weighs 11.5kg/sqm.



## FLEXIBILITY

The convex flexibility radius of a 3mm-thick Kalesinterflex Fit slab is 5.5m.



## FIRE RESISTANCE (A1 Class)

Kalesinterflex is totally fire resistant and non-flammable.



## FROST RESISTANCE

Kalesinterflex's surface is equipped with advanced technology to accommodate various climate conditions. It maintains its durability against sudden changes in heat and frost.



## EASE OF CLEANING

Kalesinterflex has a smooth surface on which dirt does not accumulate. If required it can be cleaned with water and known cleaning agents.



## ANTI-GRAFFITI

Easy to wipe and clean pollutants like crayon, graffiti, permanent marker, board marker.



## CHEMICAL RESISTANCE

Kalesinterflex is resistant to chemicals (acids and bases) due to its porcelain ceramic structure and glaze layer on its surface.



## CUTTING

It can be cut with standard glass, ceramic cutters and computer controlled automatic cutting machines in the required dimensions.



## DRILLING

Kalesinterflex can be drilled with glass drills as well as with other automatic drilling devices.



## PHOTOCATALYTIC

Kalesinterflex is photocatalytic thanks to its Kaleguard surface. Kalesinterflex cleans itself with rain and sunlight.



## FOOD GRADE

Protects both outdoor and indoor surfaces, even in poorly lit environment. Hygienic; resistant to bacteria, mould and fungus. The antibacterial feature of Kalesinterflex is approved by TÜBİTAK. (The Scientific and Technological Research Council of Turkey)



## ECO-FRIENDLY

Produced with an environmentally-friendly technology, Kalesinterflex has the Ecospecifier certificate. The gas and dust emission of Kalesinterflex is 20 times less, and CO<sub>2</sub> emission is 1000 times less, than those of traditional ceramic production processes.



## UV RESISTANT

Kalesinterflex is coated with UltraViolet protection technology to block harmful radiation and ensure increased durability.

\*The specified weights reflect average values and may vary depending on the product.

*Give wings*  
to your  
imagination

**Kalesinterflex®**  
PORCELAIN SLIM SLABS





SLAB SIZE: 3000 mm x 1000 mm | Thickness 3 mm & 5 mm

## LUXURY CEMENT



MINK

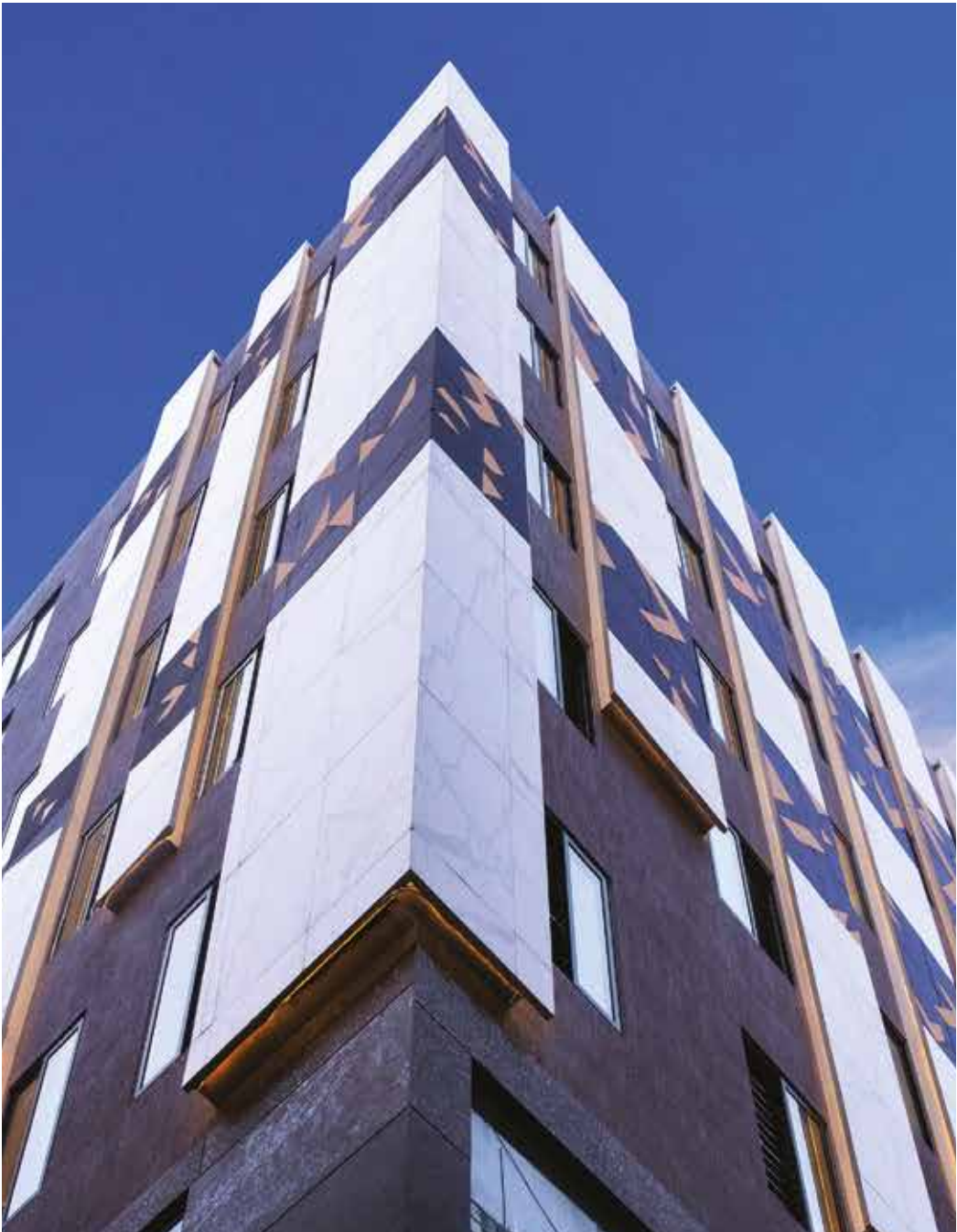


CEMENTO



GREY

# MARBLE



SLAB SIZE: 3000 mm x 1000 mm | Thickness 3 mm & 5 mm



PULPIS



NATURAL CALACATTA  
ORO - KALOS BIANCO



NATURAL  
TRAVENTINO  
BEIGE- BARI

# UPTOWN



SLAB SIZE: 3000 mm x 1000 mm | Thickness 3 mm & 5 mm



UPTOWN LIGHT



UPTOWN DARK



SLAB SIZE: 3000 mm x 1000 mm | Thickness 3 mm & 5 mm

## TRANSLUCENT



ONYX TRANSLUCENT

**EDILGRES PIETRA**



CHATTILONIS



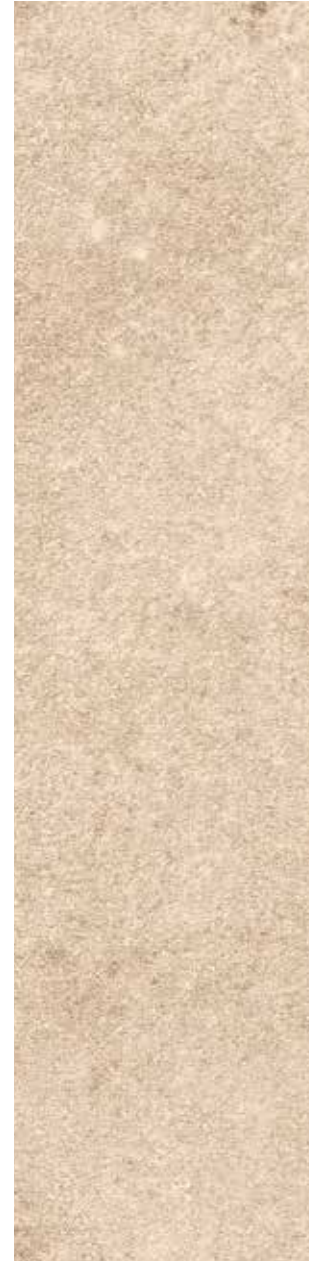
TOSCANA

**INNOVATION**



MEGA BLACK

**NATURAL STONE**



FOSSIL CREAM

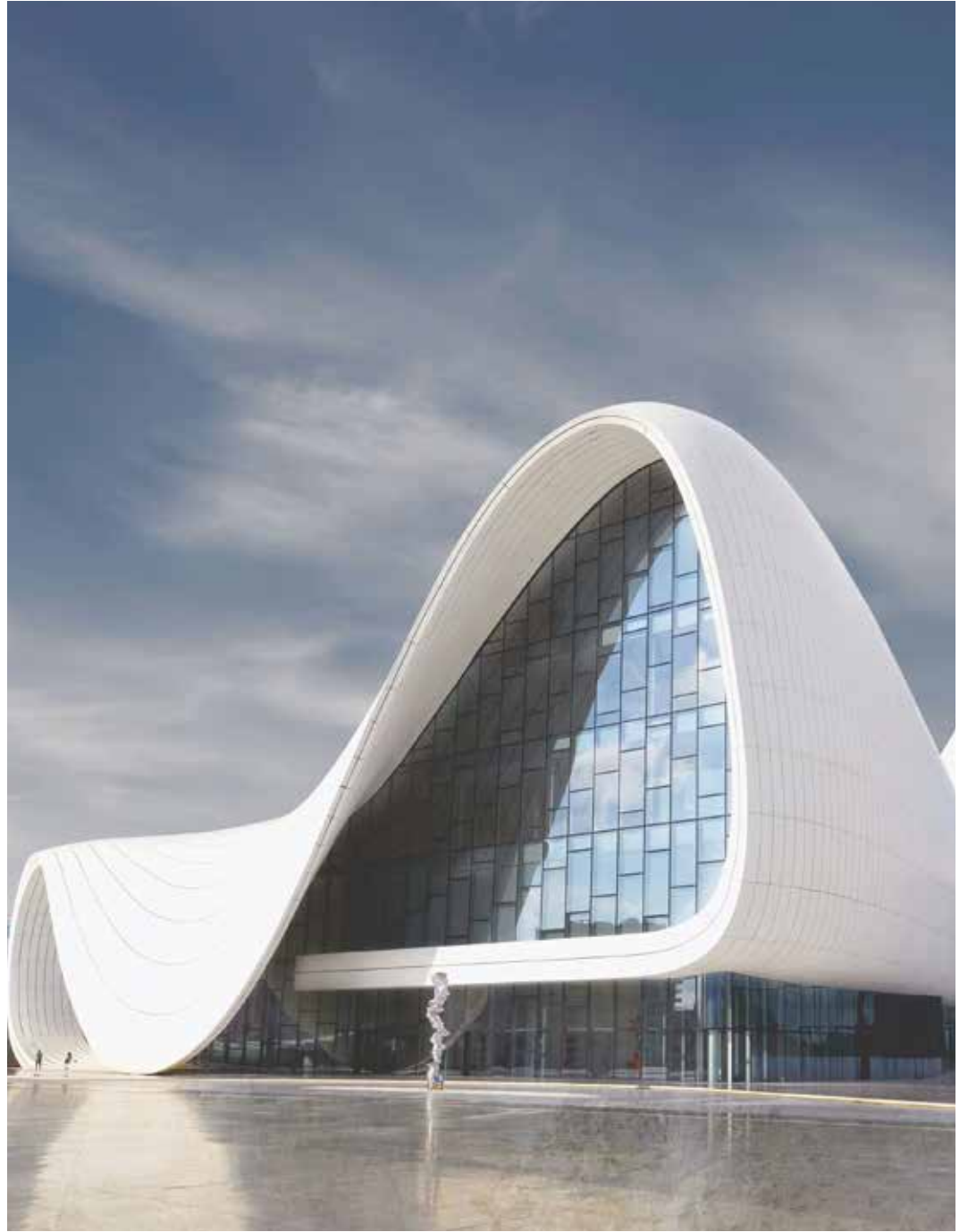
**LEGNO**



WOOD WALNUT

# PROJECTS REFERENCES





Infinite, unimaginable and incredible  
*design* possibilities

**TECHLAM®**





SLAB SIZE: 3000 mm x 1000 mm | Thickness 3 mm & 5 mm

## STONE COLLECTION

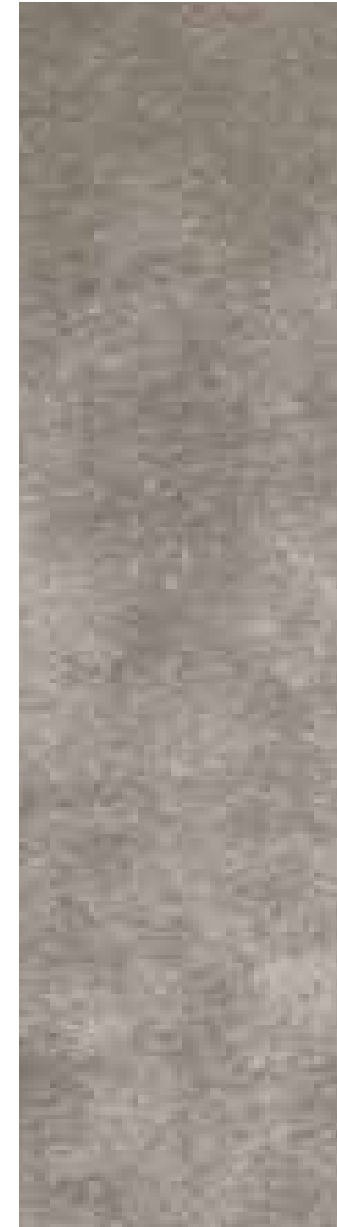


STRATTOS  
NATURAL FINISH

## VULCANO COLLECTION



SLAB SIZE: 3000 mm x 1000 mm | Thickness 3 mm & 5 mm



VULCANO CENIZA

## HYDRA COLLECTION



SLAB SIZE: 3000 mm x 1000 mm | Thickness 3 mm & 5 mm



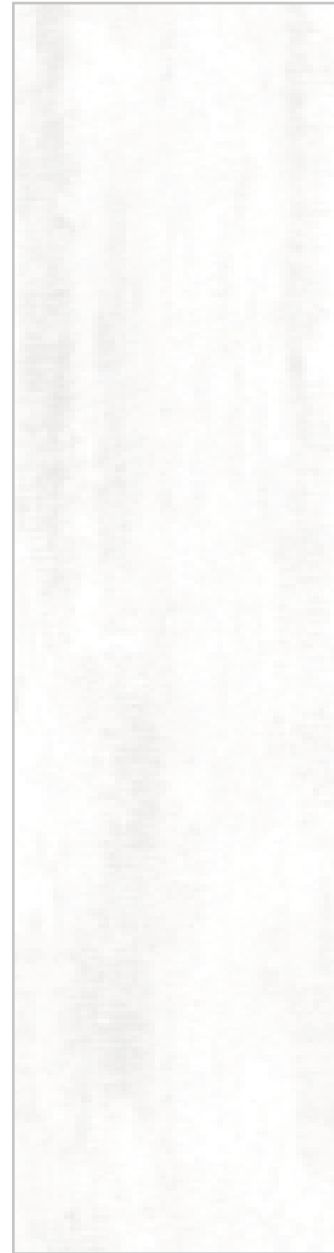
HYDRA ARGENT



HYDRA BEIGE



## BLAZE COLLECTION



BLAZE SNOW



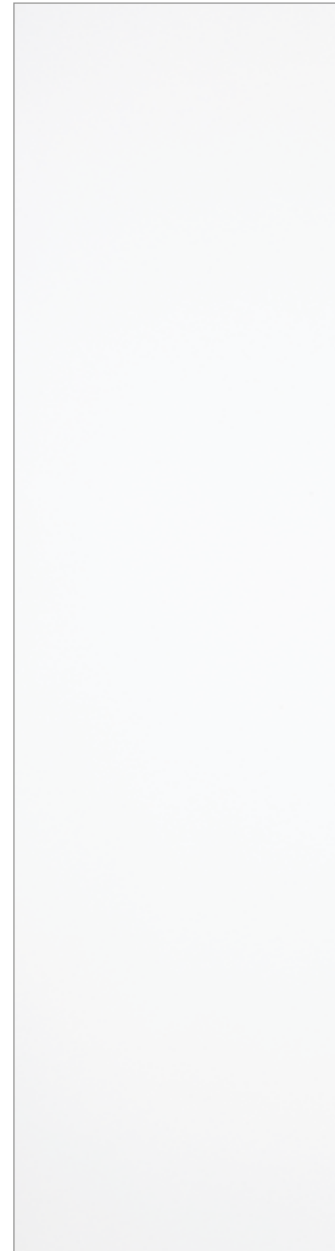
BLAZE GREY

SLAB SIZE: 3000 mm x 1000 mm | Thickness 3 mm & 5 mm

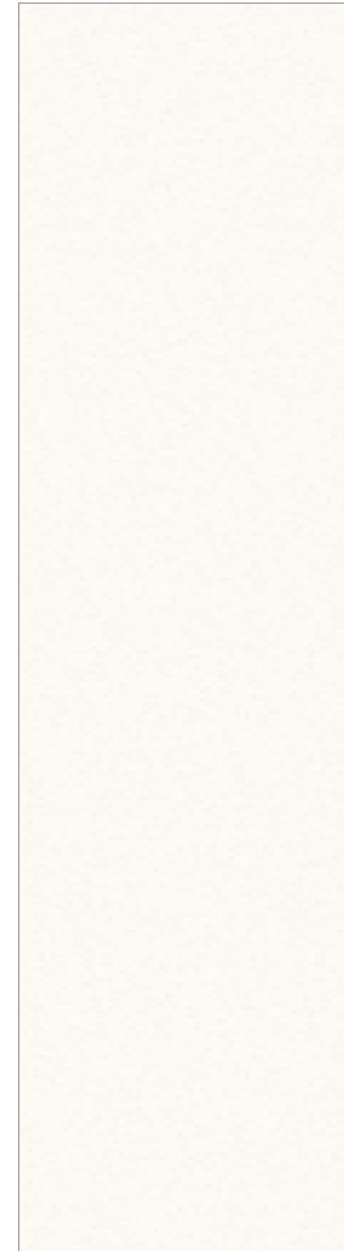


SLAB SIZE: 3000 mm x 1000 mm | Thickness 3 mm & 5 mm

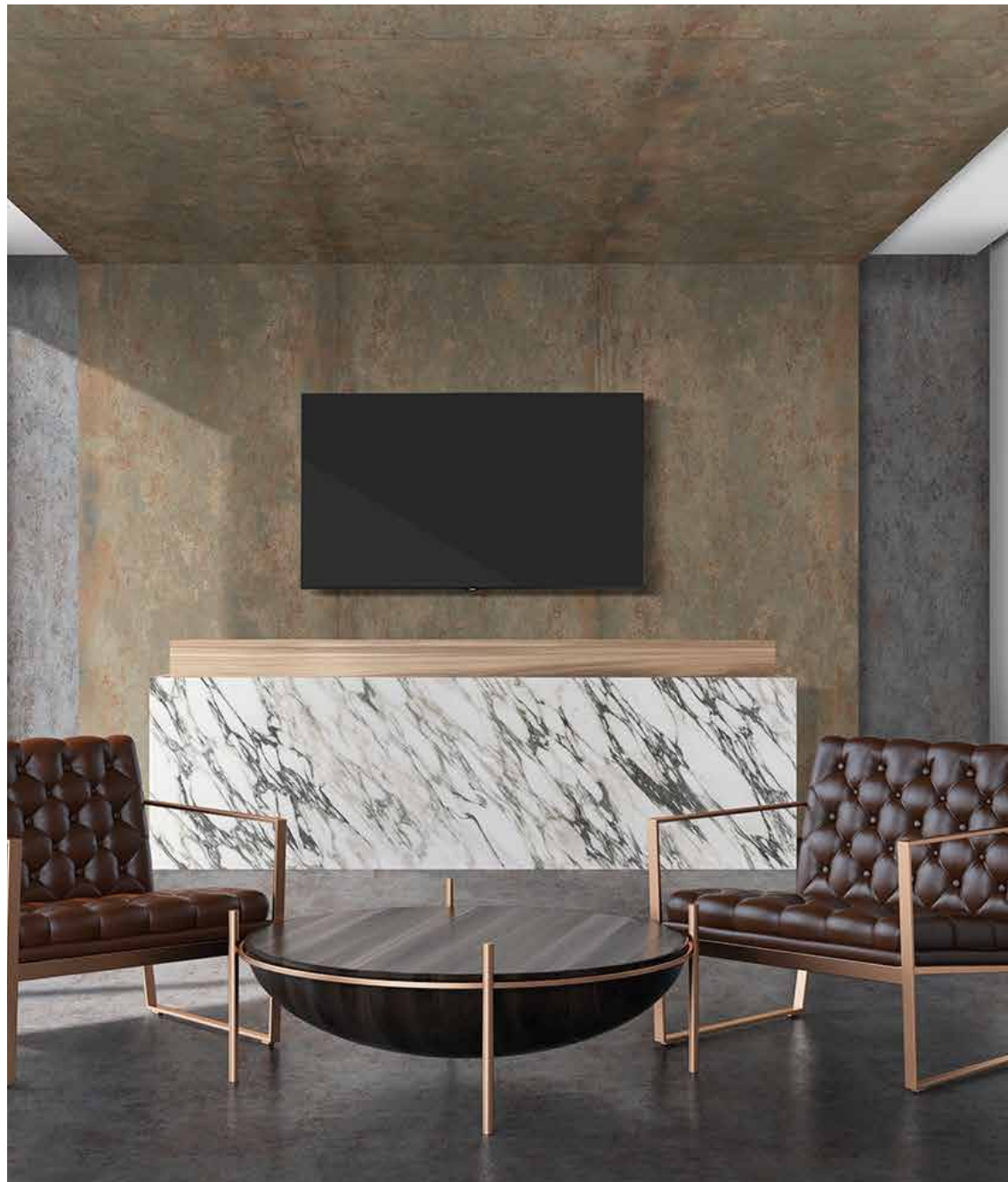
## BASIC COLLECTION



BASIC ICE



BASIC NEU



SLAB SIZE: 3000 mm x 1000 mm | Thickness 3 mm & 5 mm

## METALLO COLLECTION



METALLO CORTEN



METALLO DARK



SLAB SIZE: 3000 mm x 1000 mm | Thickness 3 mm & 5 mm

## METALLO COLLECTION



METALLO PEARL



SLAB SIZE: 3000 mm x 3000 mm | Thickness 3 mm & 5 mm

## STEEL COLLECTION



STEEL CHROME



STEEL BRASS

# STEEL COLLECTION



SLAB SIZE: 3000 mm x 3000 mm | Thickness 3 mm & 5 mm



STEEL CORTEN  
(BROWN)



STEEL DARK  
(BLACK)



SLAB SIZE: 3000 mm x 3000 mm | Thickness 3 mm & 5 mm

## STEEL COLLECTION



STEEL MARINE

# PROJECTS REFERENCES



# PROJECTS REFERENCES



# PROJECTS REFERENCES



# PROJECTS REFERENCES



# PROJECTS REFERENCES



# PROJECTS REFERENCES



# PROJECTS REFERENCES



# PROJECTS REFERENCES



# PROJECTS REFERENCES



# PROJECTS REFERENCES



# PROJECTS REFERENCES



# PROJECTS REFERENCES



# PROJECTS REFERENCES



# PROJECTS REFERENCES





**KalingaStone**<sup>®</sup>  
TERRAZZO, MARBLE & QUARTZ  
PORCELAIN SURFACES

---

**Kalingastone Factory:**

Survey No. 286, Village Naroli, Near Naroli RTO Check Post,  
Silvassa - 396230, U.T. of Dadra & Nagar Haveli, India.  
Phone No.: (91-260) 351 6000 | Fax: (91-22) 351 6001  
E: [info@kalingastone.com](mailto:info@kalingastone.com) | W: [www.kalingastone.com](http://www.kalingastone.com)

---

**City Center Showroom:**

Sri Ram Mills Compound, Gate No. 3A, Near Ansal Heights,  
G. M. Bhosale Road, Worli Naka, Mumbai - 400 018.  
Phone No.: (91-22) 2495 5994 | Fax: (91-22) 2495 5993  
E: [worli@classicmarble.com](mailto:worli@classicmarble.com)

---

**Corporate Office:**

15, Bhandup Village Road, Subhash Nagar, Bhandup (W),  
Mumbai - 400 078, Maharashtra, India.  
Phone No.: (91-22) 4140 4140 | (91-22) 4140 4100  
Fax: (91-22) 4140 4141

---